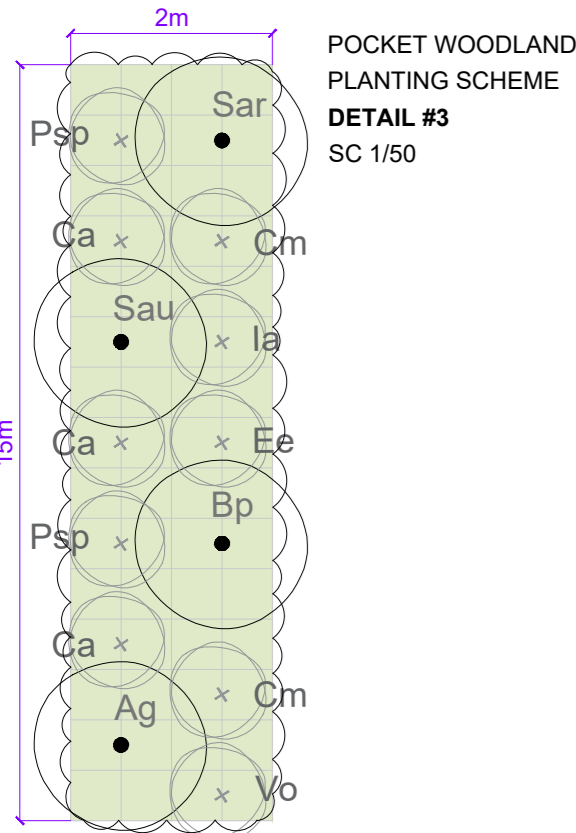
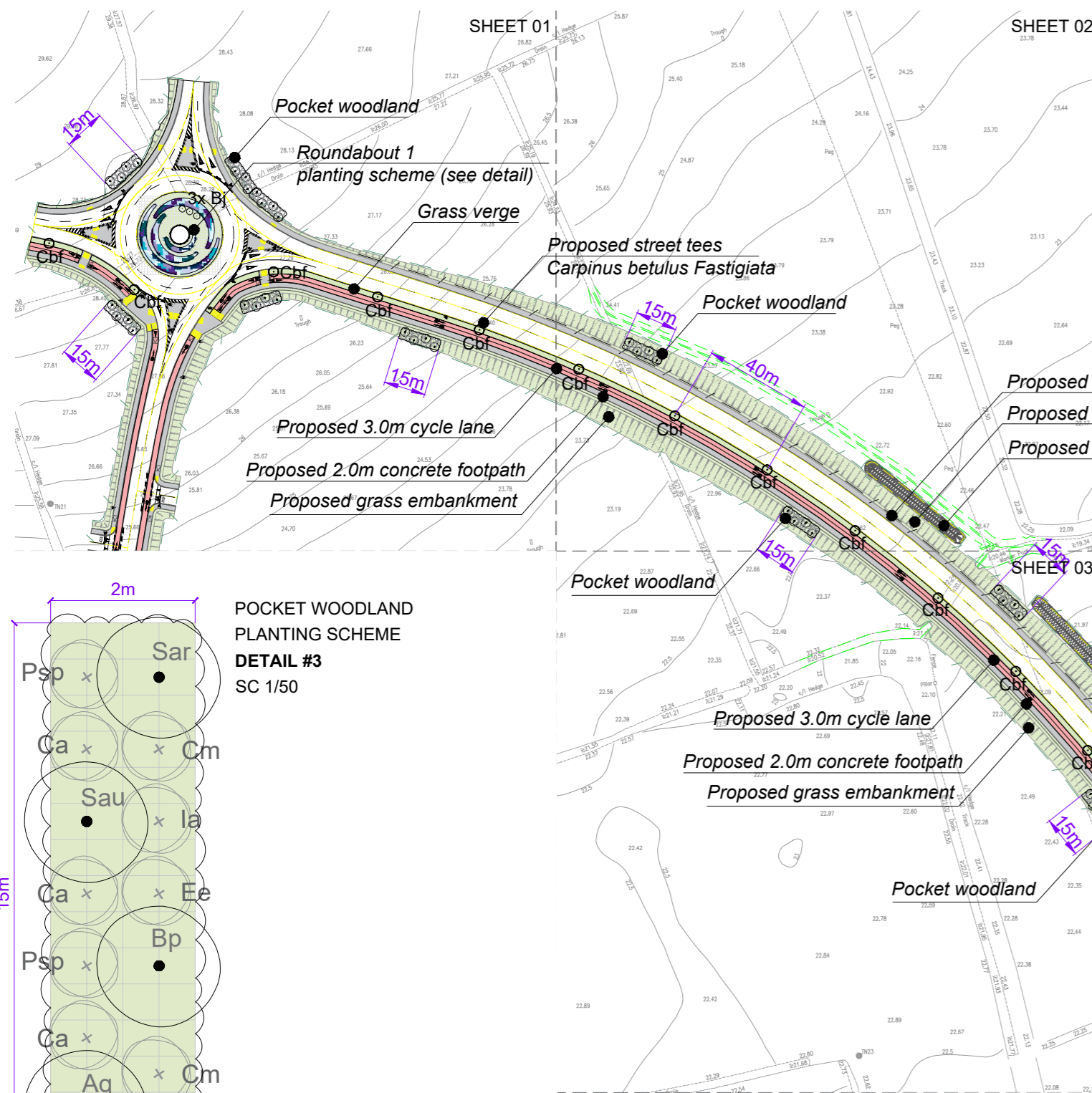


PORT ACCESS NORTHERN CROSS ROUTE, PHASE 2, DROGHEDA, CO.LOUTH

LANDSCAPE MASTERPLAN  
SC 1/200

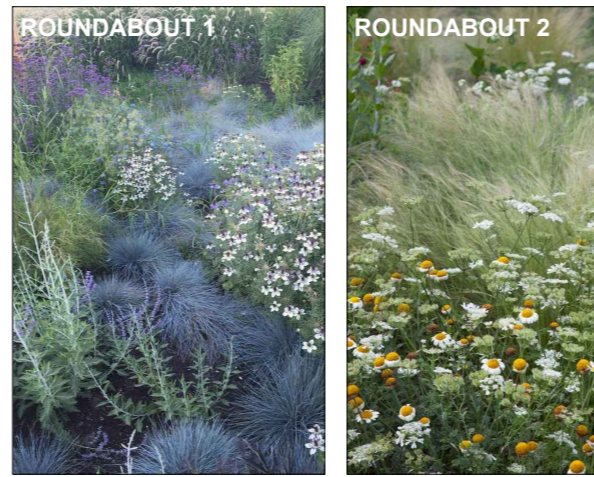


**Tree Planting Specification**  
Tree planting throughout the scheme has been selected to blend the development in to its surrounding environs and create focal points within the development. The tree species selected will maximise food and nectar sources for birds and invertebrates. Trees will be planted as Standard and Heavy Standard to provide a reasonable degree of instant maturity to the development. All trees shall be planted between the months of Nov and March. The trees shall be purchased from a reputable nursery as rootball specimens and final order to be agreed by Landscape Architect; The trees shall be planted on delivery. If this is not possible due to weather conditions (wet or frosty), the plants must be healed in. Maintenance Watering is essential during the first 2 growing seasons regardless of the weather conditions - 1000L / Tree/ Month.

**Methodology and Guidance notes:** The tree pit should have a diameter at least 100mm greater than that of the root system, with the depth not exceeding the rootball. Any glazed or smeared sides caused by digging shall be scarified with the use of a fork. The tree will be positioned in the centre of the planting pit at the correct depth, taking into account the root flare and finished level. Prior to backfilling the hessian twine/wire cage supporting the rootball shall be loosened or removed. Backfilling shall be carried out in layers of 150mm, ensuring the tree is held upright. At each stage the fill will be carefully firmed in to eliminate air pockets under and around the root system. The final layer of backfill will not be consolidated, but should be of a sufficient depth to allow for settlement and mulching. Formative pruning should be carried out if required, removing dead, damaged, crossing or diseased branches. Refer to Tree planting specification for tree anchoring system. All trees planting operation will be carried in accordance with BS8545:2014 Trees: from nursery to independence in the landscape -Recommendations.

Street Trees				
Code	Scientific Name	Common Name	Size	Quantities
Cbf	<i>Carpinus betulus Fastigiata</i>	Upright Hornbeam	18-20cm girth, 4-5m tall, feathered, R/B	24
Bj	<i>Betula Jacquemontii</i>	Himalayan Birch	250-300cm multi-stem, R/B	6
Woodland Mix				
Code	Scientific Name	Common Name	Size	Quantities
Ag	<i>Alnus glutinosa</i>	Alder	14-16cm girth, 4-5m tall, R/B	22
Bp	<i>Betula pendula</i>	Silver Birch	14-16cm girth, 4-5m tall, R/B	22
Sau	<i>Sorbus aucuparia</i>	Mountain Ash	12-14cm girth, 3-3.5m tall, R/B	22
Sar	<i>Sorbus aria</i>	Whitebeam	14-16cm girth, 4-5m tall, R/B	22
Canopy Layer				
Ca	<i>Corylus avelana</i>	Hazel	B/R, 100-150cm high	66
Cm	<i>Crataegus monogyna</i>	Hawthorn	B/R, 100-125cm high	44
Ee	<i>Euonymus europaeus</i>	Spindle	B/R, 60-90cm high	22
la	<i>Illex aquifolium</i>	Holly	B/R, 60-90cm high	22
Psp	<i>Prunus spinosa</i>	Blackthorn	B/R, 90-120cm high	44
Vo	<i>Viburnum opulus</i>	Guelder Rose	B/R, 60-90cm high	22
Irish Traditional Native Hedgerow				

REFERENCE IMAGE PLANTING MIX



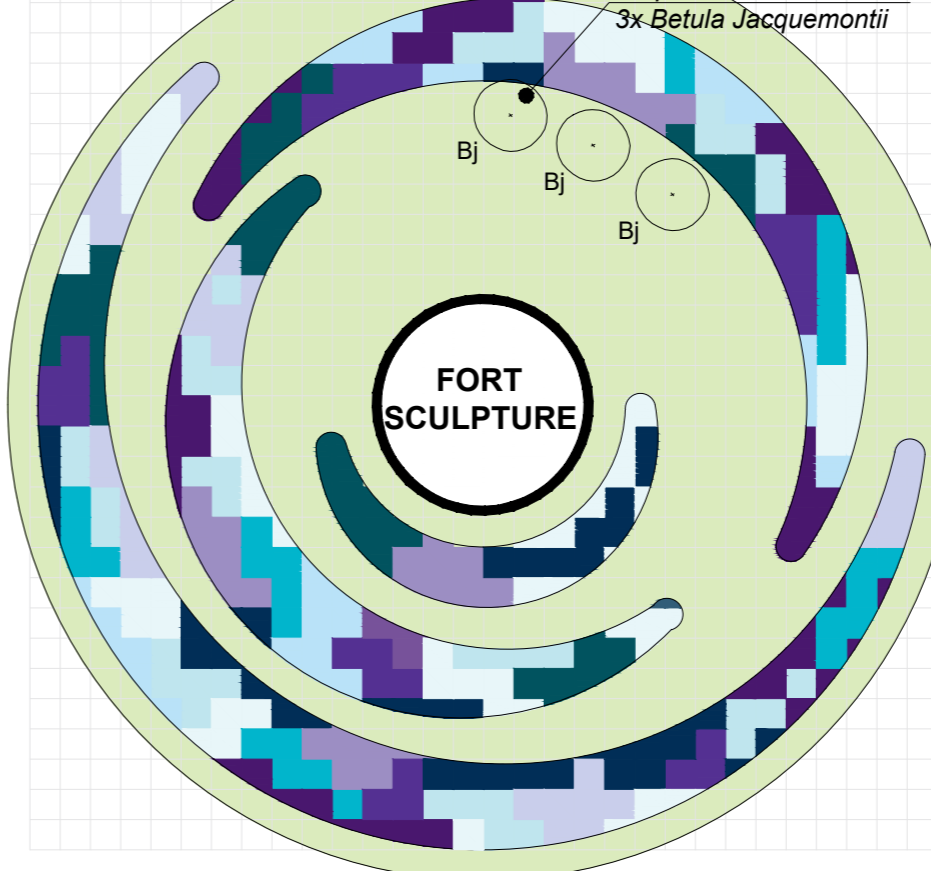
ROUND ABOUT 1 - PLANTING SCHEME

- DETAIL #1**
- 5plants per sq.m. Festuca glauca
  - 5plants per sq.m. Gaura lindheimeri 'Whirling Butterflies'
  - 5plants per sq.m. Geranium 'Rozanne'
  - 3plants per sq.m. Lavandula angustifolia 'Hidcote'
  - 4plants per sq.m. Nepeta faassenii 'Walker's Low'
  - 1plants per sq.m. Pennisetum alopecuroides 'Hameln'
  - 2plants per sq.m. Perovskia atriplicifolia 'Blue Spire'
  - 5plants per sq.m. Salvia nemorosa 'Caradonna'
  - 3plants per sq.m. Stipa tenuissima (Nassella tenuissima)
  - 2plants per sq.m. Verbena bonariensis
  - Grass area

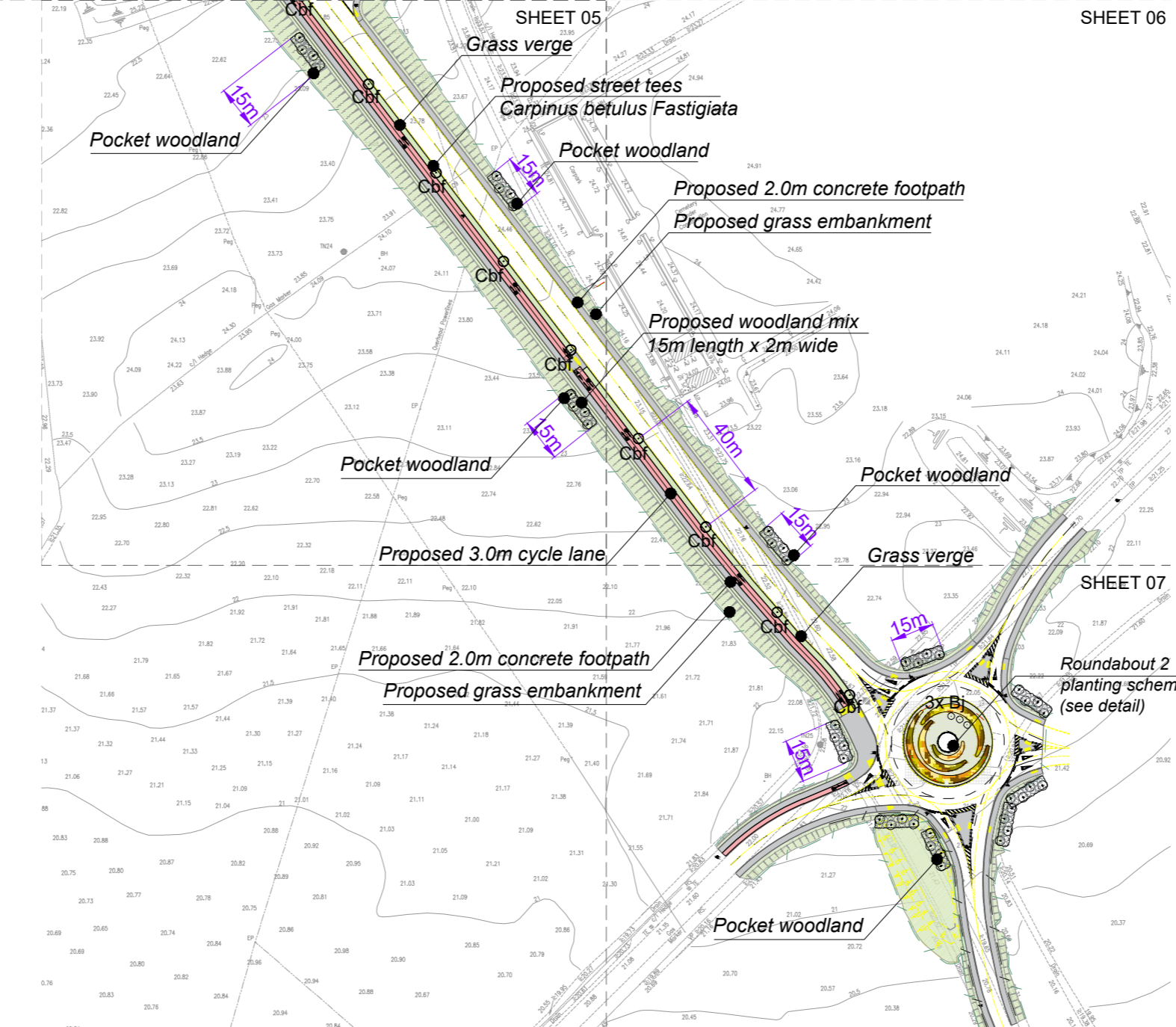
ROUND ABOUT 2 - PLANTING SCHEME

- DETAIL #4**
- 4plants per sq.m. Achillea millefolium
  - 5plants per sq.m. Anthemis tinctoria
  - 4plants per sq.m. Daucus carota
  - 4plants per sq.m. Leucanthemum vulgare
  - 3plants per sq.m. Pennisetum alopecuroides
  - 5plants per sq.m. Stipa tenuissima
  - Grass area

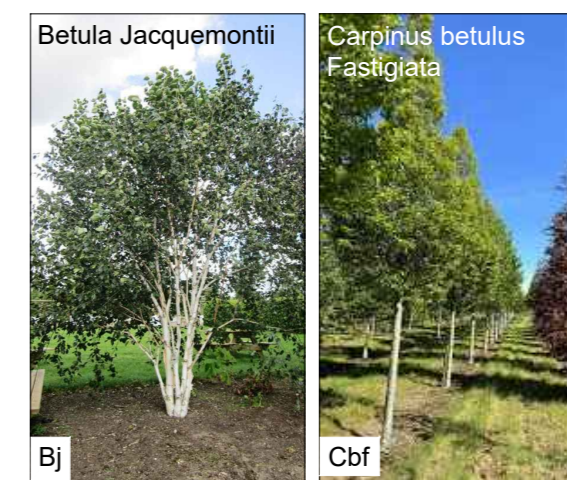
ROUNDABOUT 1 PLANTING SCHEME



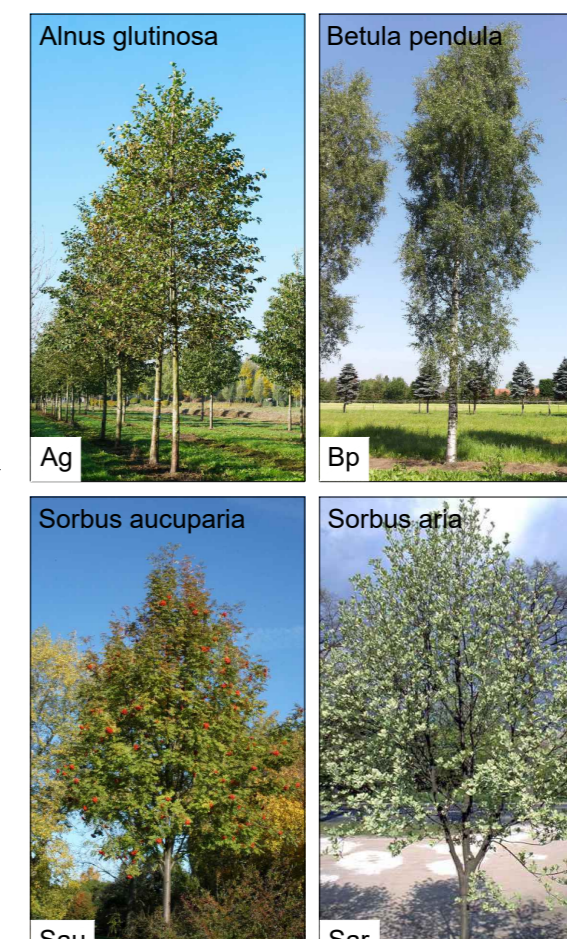
ROUNDABOUT 2 PLANTING SCHEME



REFERENCE IMAGE OF STREET TREES



REFERENCE IMAGE OF WOODLAND TREES



**g+a Landscape Architecture**

+353 1 442 8187 info@gannanandassociates.ie gannanandassociates.ie  
+121 Baggot Street Lower, Dublin 2, D02FD45

C	06/03/26	LANDSCAPE MASTERPLAN PS	JG
B	12/02/26	LANDSCAPE MASTERPLAN PS	JG
A	14/05/25	LANDSCAPE MASTERPLAN PS	JG
REV	DATE	REVISION	DRAWN   CHECKED

CLIENT  
Murphy Homes Ltd

PROJECT TITLE  
PORT ACCESS NORTHERN CROSS ROUTE, PHASE 2, DROGHEDA, CO.LOUTH

PROJECT ARCHITECT

SHEET TITLE  
LANDSCAPE MASTERPLAN

SHEET NO.  
25150\_PNACR\_T\_C\_LM

SCALE  
AS SHOWN

STAGE  
TENDER

SHEET SIZE  
A1

REVISION  
C

DATE  
MARCH 2026